

CERTIFICATE OF LOCATION OF GOVERNMENT CORNER

NORTH QUARTER Corner of Section 26, Township 106, Range 43, 5TH P.M.

STATE OF MINNESOTA, County of MURRAY

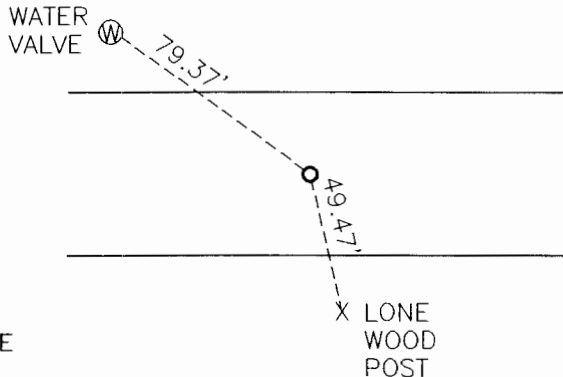
At the corner location shown on the sketch:

On 10-12-2005 found a FIELD STONE
DATE

left monument as found, lowered monument, removed monument (explain)

On 10-12-2005 placed a 5/8" IRON WITH SEAL #43844 TO NORTH OF STONE
DATE

SKETCH OF REFERENCE TIES



BEARING BASED ON
MINNESOTA STATE PLANE
COORDINATE SYSTEM
MN SOUTH ZONE
NAD 83 (1996).

N: 685975.534
E: 2105048.561

NAIL AND SEAL IN LONE WOOD POST SE 49.47'
TOP CENTER OF WATER VALVE NW 79.37'

Statement of evidence relative to this corner location is on back of page.

I hereby certify that this document and the data contained herein was prepared by me or under my direct supervision.

James V. Johnson 10/21/05
SIGNATURE DATE

Registration No. 43844

Land Surveyor, Professional Engineer
 County Surveyor, County Engineer

OFFICE OF THE COUNTY RECORDER

County of _____

I hereby certify that this document was filed in the Co. Recorders office at _____ .M on the _____ day of JAN 26 2006 A.D. 20 _____

County Recorder *James V. Johnson*
By _____, Deputy

DOCUMENT NO. _____

Statement of Evidence

On September 8-15, 1866 J.W. Bishop conducted the original survey, during which he established the corner to be midway and online.

In 1952 M.E. Coppman found a round stone with another underneath center of grade.

On October 12, 2005 Bueltel-Moseng Land Surveying found a field stone while digging with a backhoe. An "X" was chiseled in the center of the stone and a 5/8" iron with seal #43844 was placed to the north of the stone.